



SPS New England, Inc.

SPS Main Office & Fabrication Facility

98 Elm Street, Salisbury MA 01952 | www.spsnewengland.com

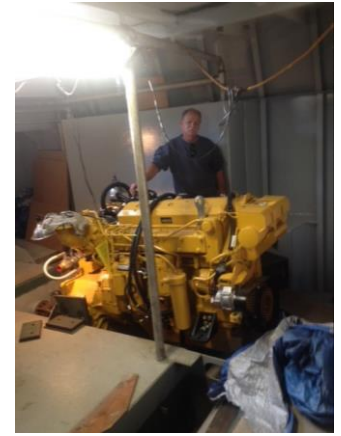
SPS Boston Harbor Marine Facility

95 Behen Street, Everett MA 02149 | Island End River off Mystic River

Contact: Greg Bashaw, SPS Port Captain | gbashaw@spsne.com

Brahma

26-ft, 1000 hp Custom Built Push Tug



Builder: Fitzgerald Marine Fabricators, Fairhaven, MA. Completed Dec. 2014

Length: 25'11"

Beam: 18'3"

Draft: 6'5"

Height of Eye-Enclosed Wheelhouse: 21'

Displacement: 104,000 lbs.

Other Specs:

- 1000 hp-Twin 500 hp John Deere Diesels, Tier II Compliant
- ZF 4:1 Gears
- 4" Shafts with 46" Four Blade Props
- 5 KW Northern Lights Generator-Tier III
- ZF Electronic Controls
- Hydraulic Make-up Winches
- 14' Push Knees
- Fuel Capacity: 2000 Gallons
- Furuno Radar/Chart Plotter/GPS/Depth
- ICOM VHF Radio
- Ship AIS tracking and position sending unit

Other Tugs Available for Rent:

Angus 55-ft, 1400 hp

Virginia 39-ft, 820 hp

Kathadin 26-ft, 750 hp

Visit www.spsnewengland.com to view SPS Marine Facility, Vessels & Equipment
or contact Greg Bashaw, SPS Port Captain at gbashaw@spsne.com